

<p>कोल इण्डिया लिमिटेड कंपनी सचिवालय 3 तल्ला, कोर-2, प्रेमिसेस-04-एमआर, प्लॉट-ए एफ-III, एक्शन एरिया-1A, न्यूटाउन, रजरहट, कोलकाता-700156, फोन-0332324555, ईमेल: <a href="mailto:complianceofficer.cil@coalindia.in">complianceofficer.cil@coalindia.in</a> वेबसाइट: <a href="http://www.coalindia.in">www.coalindia.in</a> सी आई एन - L23109WB1973GOI028844</p>	 <p>एक महारत्न कंपनी A Maharatna Company</p>	<p><b>Coal India Limited Company Secretariat</b> Regd. Office: 3rd floor, Core-2 Premises no-04-MAR, Plot no-AF-III, Action Area-1A, Newtown, Rajarhat, Kolkata-700156 PHONE; 033-2324-5555, E-MAIL: <a href="mailto:complianceofficer.cil@coalindia.in">complianceofficer.cil@coalindia.in</a> WEBSITE: <a href="http://www.coalindia.in">www.coalindia.in</a> CIN- <a href="http://www.coalindia.in">L23109WB1973GOI028844</a></p>
--	--	--

Ref.No.CIL:XI(D):4157/4156:2025:

Dated: 27.01.2025

To,  
Listing Department,  
Bombay Stock Exchange Limited,  
Scrip Code 533278

To,  
Listing Department,  
National Stock Exchange of India  
Limited,  
Ref: ISIN – INE522F01014

**विषय: 31 दिसंबर 2024 को समाप्त तिमाही और नौ महीनों के लिए एकीकृत फाइलिंग (वित्तीय) पर कंपनी द्वारा दी गई प्रस्तुति।**

**Sub: Presentation made by Company on the Integrated Filing (Financial) for the 3<sup>rd</sup> Quarter and Nine months ended 31st Dec' 2024.**

महोदय

लिस्टिंग विनियमन 2015 के विनियमन 30 के संदर्भ में, हम 31 दिसंबर 2024 को समाप्त तीसरी तिमाही और नौ महीनों के लिए एकीकृत फाइलिंग (वित्तीय) पर कॉर्पोरेट प्रस्तुति की प्रति संलग्न कर रहे हैं। यह आपकी जानकारी और रिकॉर्ड के लिए है।

In terms of Regulation 30 of Listing Regulations 2015, we are enclosing copy of the corporate presentation on the Integrated Filing (Financial) for the 3rd Quarter and Nine months ended 31st Dec' 2024. This is for your information and record please.

Yours faithfully,

बी पी दूबे/B.P. Dubey  
Company Secretary/कंपनी सचिव  
& Compliance Officer/कम्प्लायंस ऑफिसर

Encl: As above

Nigahi, NCL, 50 MW power project



A MAHARATHA COMPANY



5 DECADES OF UNEARTHING ENERGY

**COAL INDIA LTD**

**Performance Highlights of 9M and  
3<sup>rd</sup> Quarter ending 31<sup>st</sup> Dec, 2024**



A MAHARATNA COMPANY



5 DECADES OF UNEARTHING ENERGY

# Major Events

01

## Solar Power Project

Commissioned 50 MW Solar Power Plant at Northern Coalfields Limited (NCL) in Nigahi (Largest Solar Power Plant in CIL) in November 2024.

02

## Coal to Synthetic Natural Gas Project

MoU executed with BPCL on 02.12.2024 to explore setting up of Coal to Synthetic Natural Gas Project at WCL through Surface Coal Gasification.

03

## Financial Incentive for Gasification Projects

LoA Awarded by MoC for ₹ 1,350 Crores Financial Incentive for each of the three Coal gasification Projects.

04

## Diversification in other Critical Minerals

MoU executed with IREL (India) Ltd on 06.01.2025 for development of mutually agreed assets of critical mineral.

# Physical Performance 9M 24-25

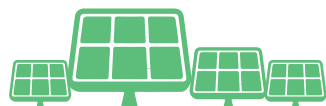


A MAHARATNA COMPANY

5 DECADES OF UNEARTHING ENERGY



	Production (MT)	Offtake (MT)	OBR (M.CuM)
<b>9M 24-25</b>	<b>543.36</b> ↑ 2%	<b>560.62</b> ↑ 2%	<b>1,433.68</b> ↑ 5%
<b>9M 23-24</b>	<b>531.89</b>	<b>551.88</b>	<b>1,365.91</b>



# PRODUCTION ( IN MILL. TONNE)

## 9M 24-25 vs 9M 23-24

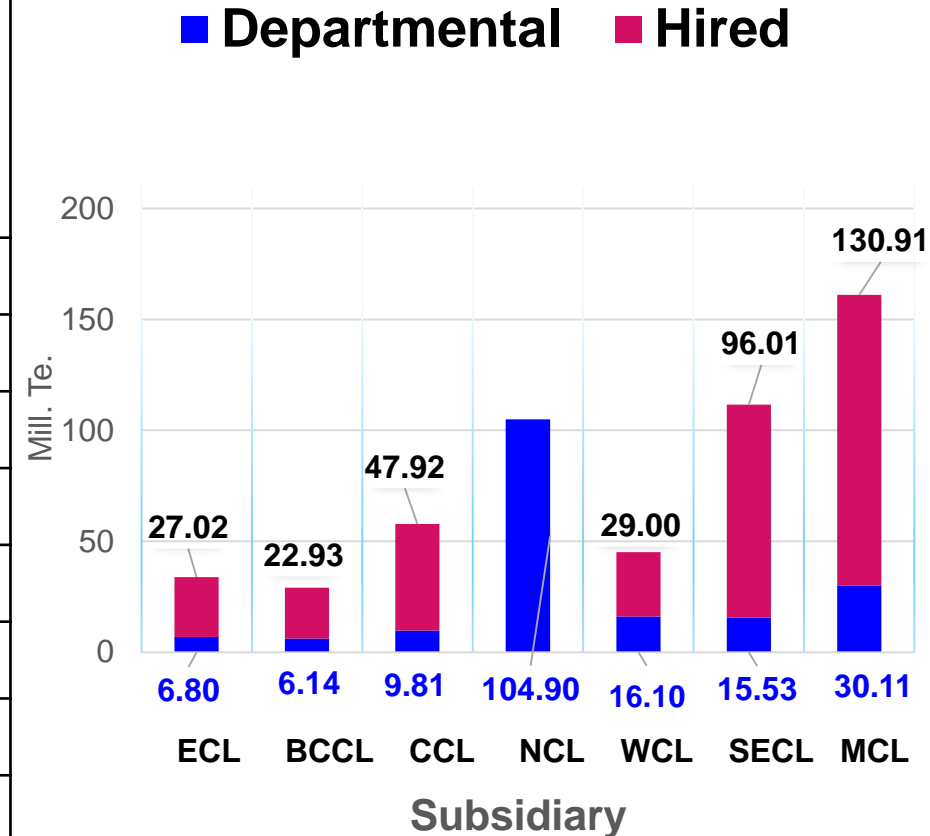


A MAHARATNA COMPANY

5 DECADES OF UNEARTHING ENERGY



Subsidiary	9M 24-25		9M 23-24 (Actual)	Variance with Last Year (%)
	Target *	Actual		
ECL	35.35	<b>33.82</b>	30.01	13%
BCCL	31.90	<b>29.07</b>	29.83	-3% ↓
CCL	66.48	<b>57.73</b>	55.78	3%
NCL	105.12	<b>104.90</b>	103.90	1%
WCL	44.66	<b>45.10</b>	43.59	3%
SECL	133.00	<b>111.54</b>	123.12	-9% ↓
MCL	158.79	<b>161.02</b>	145.54	11%
NEC	0.12	<b>0.18</b>	0.12	49%
<b>Overall CIL</b>	<b>575.42</b>	<b>543.36</b>	<b>531.89</b>	<b>2%</b>



\* As per Annual Action Plan

# OFFTAKE ( IN MILL. TONNE)

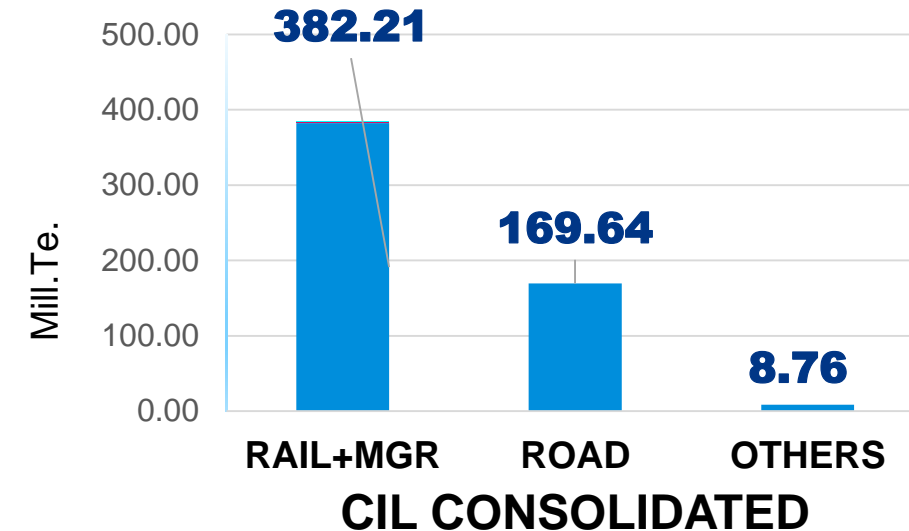
## 9M 24-25 vs 9M 23-24



5 DECADES OF UNEARTHING ENERGY

Subsidiary	9M 24-25		9M 23-24 (Actual)	Variance with Last Year (%)
	Target *	Actual		
ECL	39.11	<b>35.13</b>	29.18	20% ↑
BCCL	32.85	<b>28.38</b>	29.09	-2%
CCL	72.55	<b>63.19</b>	60.46	5% ↑
NCL	103.90	<b>102.39</b>	105.11	-3%
WCL	50.07	<b>48.74</b>	49.90	-2%
SECL	152.60	<b>124.77</b>	132.43	-6%
MCL	166.50	<b>157.82</b>	145.62	8% ↑
NEC	0.16	<b>0.20</b>	0.09	122% ↑
<b>Overall CIL</b>	<b>617.74</b>	<b>560.62</b>	<b>551.88</b>	<b>2%</b>

## MODE WISE OFFTAKE 9M 24-25

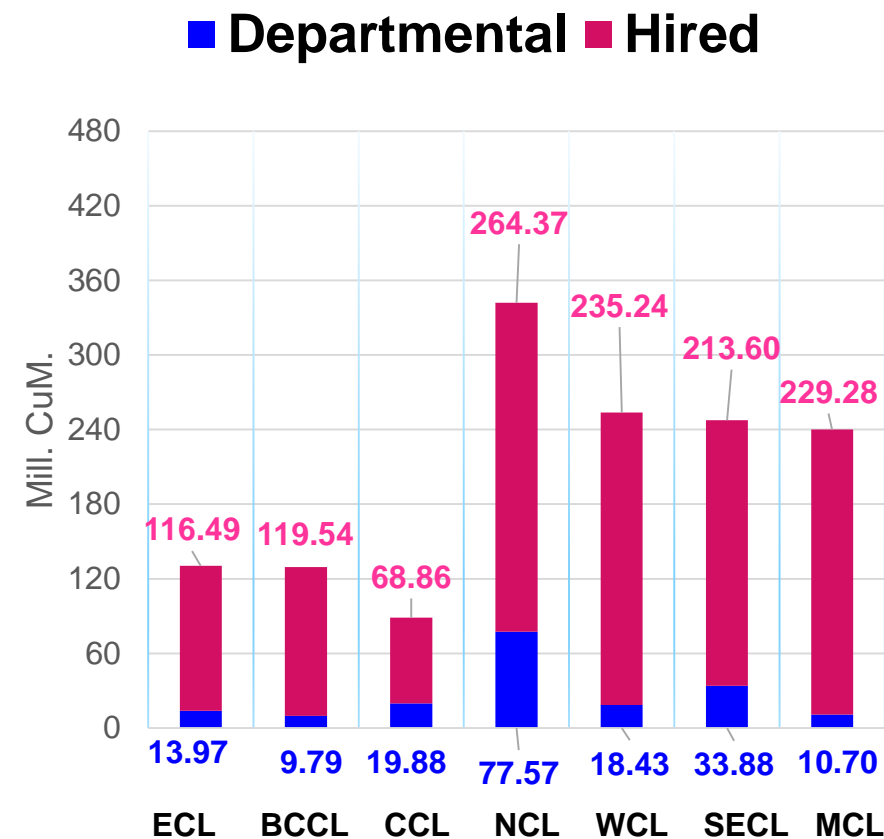


\* As per Annual Action Plan

# OBR (IN MILL. CuM.)

## 9M 24-25 vs 9M 23-24

Subsidiary	9M 24-25		9M 23-24 (Actual)	Variance with Last Year (%)
	Target *	Actual		
ECL	105.75	130.46	110.28	18%
BCCL	124.00	129.33	113.85	14%
CCL	104.10	88.73	88.64	0.11%
NCL	371.90	341.94	337.84	1%
WCL	269.01	253.68	284.51	-11% ↓
SECL	240.21	247.48	236.29	5%
MCL	211.50	239.99	192.95	24%
NEC	1.06	2.08	1.54	35%
<b>Overall CIL</b>	<b>1427.53</b>	<b>1433.68</b>	<b>1365.91</b>	<b>5%</b>



\* As per Annual Action Plan

# Inventory for 9M 24-25



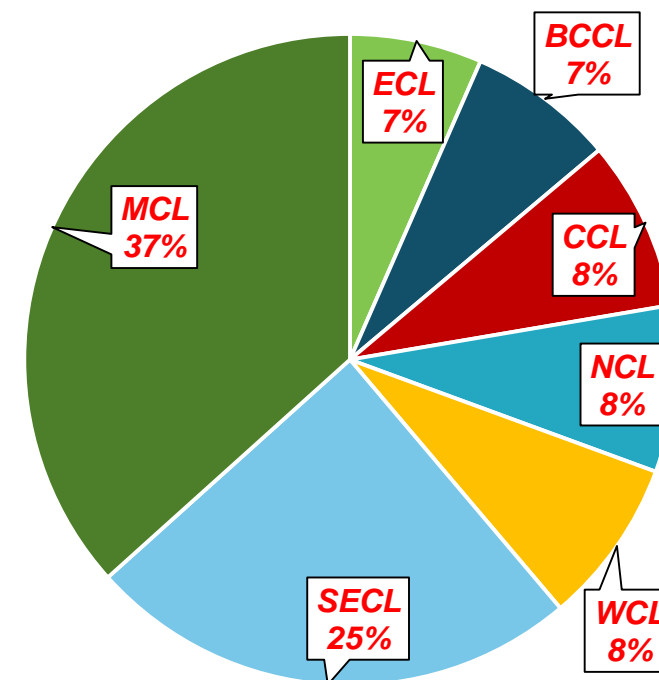
A MAHARATNA COMPANY

5 DECADES OF UNEARTHING ENERGY



Particulars (Raw Coal) (Million Tonne)	ECL	BCCL	CCL	NCL	WCL	SECL	MCL	NEC	Overall CIL
Opening Stock as on 01-04-2024	5.96	4.55	11.73	3.34	9.42	30.45	23.65	0.08	89.18
Closing Stock as on 31-12-2024	4.62	5.14	5.95	5.82	5.79	17.26	25.80	0.05	70.43
<b>Reduction of Inventory with respect to March 2024 - 19 MT (21 %)</b>									
Closing Stock as on 31-12-2023	3.14	3.33	3.76	3.62	4.30	14.35	16.37	0.08	48.95
<b>Surge of Inventory with respect to December 2023 – 21 MT ( 44 %)</b>									

Subsidiary wise Inventory  
as on 31.12.24

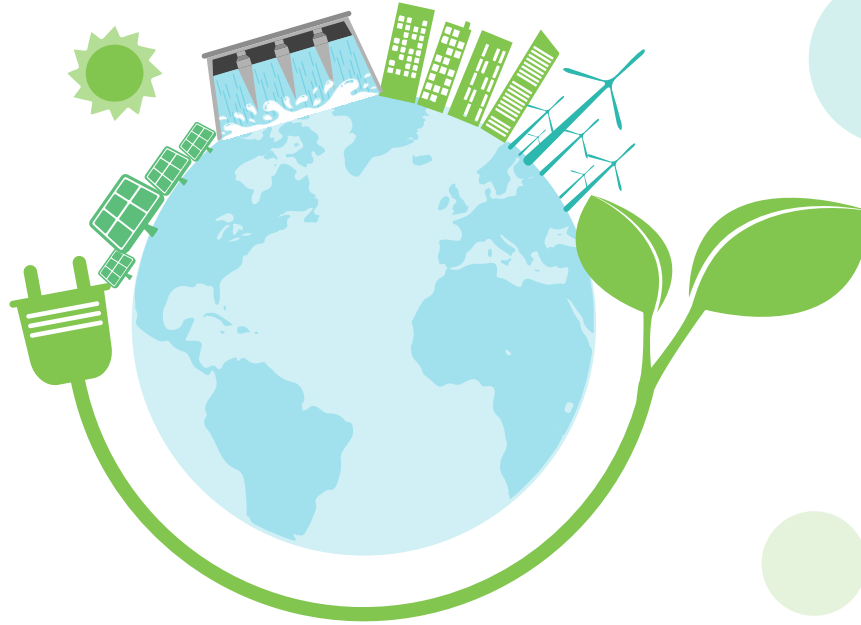




A MAHARATNA COMPANY



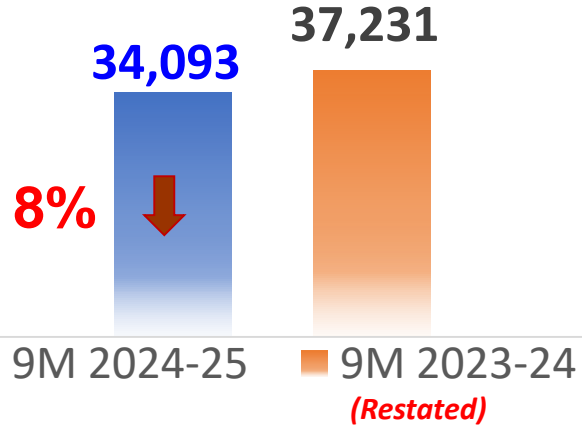
5 DECADES OF UNEARTHING ENERGY



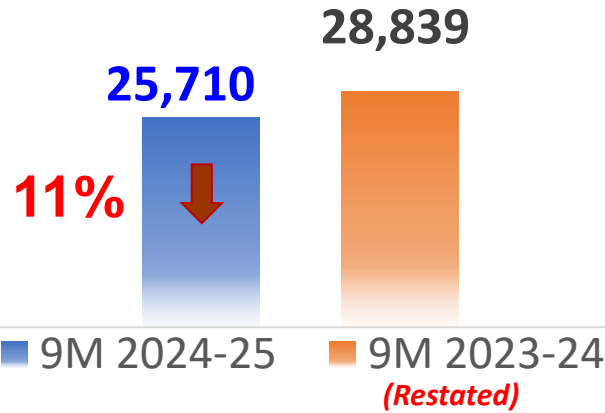
# Financial Performance- 9M 24-25

# Major Highlights-9M 2024-25

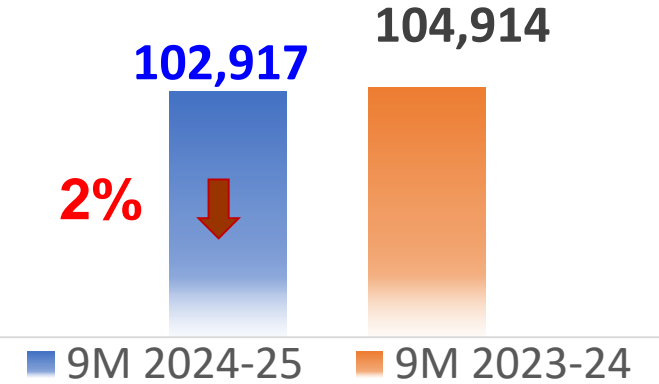
## Profit Before Tax (₹ in Cr)



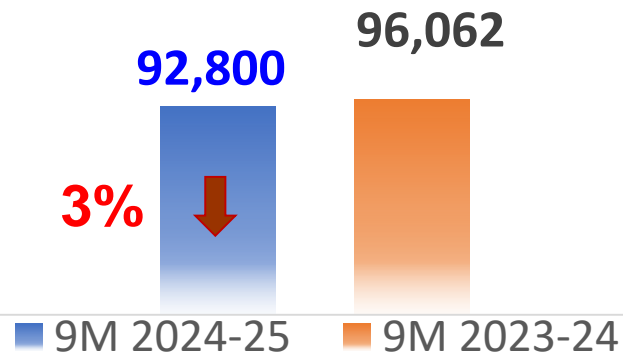
## Profit After Tax (₹ in Cr)



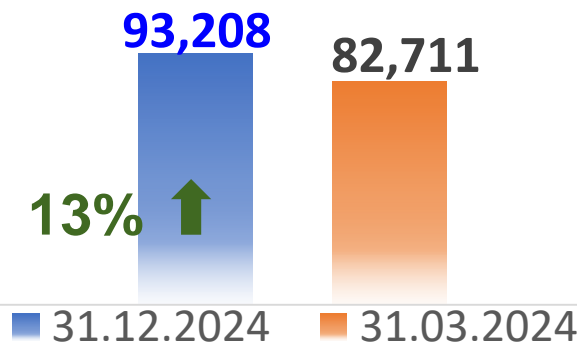
## Revenue from Operations (₹ in Cr)



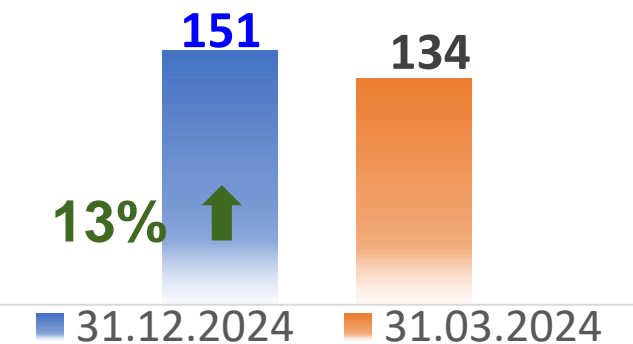
## Net Sales (₹ in Cr)



## Net Worth (₹ in Cr)



## Book Value Per Share (₹)



# Consolidated Financial Results 9M 24-25



A MAHARATNA COMPANY

5 DECADES OF UNEARTHING ENERGY



₹ Crores

Particulars	9M 24-25	9M 23-24	Inc/Dec	Inc/Dec%
Net Sales	92,800	96,062	-3,262	-3%
Other Operating Revenue	10,117	8,852	1,265	14% ↑
Other Income	5,533	5,725	-192	-3%
<b>Total Income</b>	<b>1,08,450</b>	<b>1,10,639</b>	<b>-2,189</b>	<b>-2% ↓</b>
Expenditure	74,651	73,760	891	1%
PBT (without JV)	33,799	36,879	-3,080	-8%
Share of JV Profit	294	352	-58	-16%
<b>Profit Before Tax</b>	<b>34,093</b>	<b>37,231</b>	<b>-3,138</b>	<b>-8% ↓</b>
Tax Expense	8,383	8,392	-9	-0.11%
<b>Profit After Tax</b>	<b>25,710</b>	<b>28,839</b>	<b>-3,129</b>	<b>-11% ↓</b>

# Break up of Expenditure 9M 24-25

₹ Crore

Particulars	9M 24-25	9M 23-24	Inc/Dec	Inc/Dec%
• Cost of Materials Consumed	7,766	8,218	- 452	-6% ↓
Changes in inventories	801	1,420	- 619	- 44%
• Employee Benefits Expense	34,160	35,246	- 1,086	- 3% ↓
Finance Costs	643	587	56	10%
• Depreciation, Amortization and Impairment Expenses	6,364	4,843	1,521	31%
• Stripping activity adjustment	- 6,171	- 4,594	- 1,577	34%
• Contractual Expense	22,312	19,452	2,860	15%
• Other Expenses	8,777	8,587	190	2%
<b>Total</b>	<b>74,651</b>	<b>73,760</b>	<b>891</b>	<b>1%</b>

# Subsidiary wise Profit Before Tax - 9M 24-25

₹ Crore

Subsidiary	9M 24-25	9M 23-24	Inc/Dec	Inc/Dec%
• ECL	67	462	-395	- 85% ↓
BCCL	1,639	1,679	-40	- 2% ↓
• CCL	4,575	3,863	712	18% ↑
NCL	9,436	9,130	306	3% ↑
WCL	2,713	2,622	91	3% ↑
• SECL	3,604	6,500	-2,896	- 45% ↓
• MCL	10,647	11,567	-920	- 8% ↓
CMPDIL	519	385	134	35% ↑
CIL Standalone (excl. dividend)	711	669	42	6% ↑
<b>CIL Consolidated</b>	<b>34,093</b>	<b>37,231</b>	<b>-3,138</b>	<b>- 8% ↓</b>

# Subsidiary wise Profit After Tax - 9M 24-25

₹ Crore

Subsidiary	9M 24-25	9M 23-24	Inc/Dec	Inc/Dec%
ECL	36	438	-402	-92% ↓
BCCL	1,174	1,359	-185	-14% ↓
CCL	3,384	2,856	528	19% ↑
NCL	7,026	6,914	112	2% ↑
WCL	2,026	2,303	-277	-12% ↓
SECL	2,590	4,847	-2,257	-47% ↓
MCL	8,224	8,996	-772	-9% ↓
CMPDIL	390	289	101	35% ↑
CIL Standalone (excl. dividend)	679	484	195	40% ↑
<b>CIL Consolidated</b>	<b>25,710</b>	<b>28,839</b>	<b>-3,129</b>	<b>-11% ↓</b>

# Key Financial Ratios (9M 24-25)



A MAHARATNA COMPANY

5 DECADES OF UNEARTHING ENERGY



EBITDA on Net Sales	
9M 24-25	9M 23-24
↑ 41.32%	40.61%

Current Ratio	
31.12.24	31.03.24
↑ 1.72	1.70

PE Ratio	
9M 24-25	9M 23-24
↑ 6.89	6.03

Debt Equity Ratio	
31.12.24	31.03.24
↑ 0.09%	0.08%

# SALES



A MAHARATNA COMPANY



5 DECADES OF UNEARTHING ENERGY

Net Sales (₹ Crore)	9M FY 24-25	9M FY 23-24	Inc / Dec	Inc / Dec %
	<b>92,800</b>	<b>96,062</b>	<b>-3,262</b>	<b>-3%</b> ↓



## Reason of Variance

	9M FY 24-25	9M FY 23-24	Inc/Dec	Impact (₹ Crore)	Remarks
<b>FSA</b>	Qty.(In Mill. Te)	<b>491.39</b>	494.45	<b>-3.06</b>	<b>-471</b> ↓ Reduction in FSA Qty.
	Price (In Rs./Te.)	<b>1,502</b>	1,536	<b>-34</b>	<b>-1,685</b> ↓ Reduction in Per Tonne Realization
<b>E-Auction</b>	Qty.(In Mill. Te)	<b>57.52</b>	47.67	<b>9.85</b>	<b>3,253</b> ↑ Increase in E-Auction Quantity
	Price (In Rs./Te.)	<b>2,514</b>	3,303	<b>-789</b>	<b>-4,538</b> ↓ Reduction in Per Tonne Realization
<b>Washed Coal and other</b>	Qty.(In Mill. Te)	<b>11.90</b>	10.21	<b>1.69</b>	<b>719</b> ↑ Increase in Quantity
	Price (In Rs./Te.)	<b>3,803</b>	4,256	<b>-453</b>	<b>-539</b> ↓ Reduction in Per Tonne Realization
<b>Overall Average Realization (₹ per tonne)</b>	<b>1,655</b>	<b>1,739</b>	<b>-84</b>		

# Other operating income (₹ Crore)



5 DECADES OF UNEARTHING ENERGY

(₹ Crore)

9M 2024-25	9M 2023-24	Inc / Dec	Inc / Dec %
<b>10,117</b>	<b>8,852</b>	<b>1,265</b>	<b>14% ↑</b>

- Reason of Variance

- First time income from Rail Line (Basundhara area) in MCL in 9M 24-25 of ₹ 241 Crore
- Reclassification of Mileage and Siding User Charges amounting ₹ 123 Crore under other operating income by CCL
- Increase in Surface Transportation Charges - ₹ 356 Crore due to increase in Offtake and revision rates.

# Other income (₹ Crore)



5 DECADES OF UNEARTHING ENERGY

9M 2024-25	9M 2023-24	Inc / Dec	Inc / Dec %
<b>5,533</b>	5,725	<b>-192</b>	<b>-3% ↓</b>

## Reason of Variance

- i) Interest income & Gain on Sale of Mutual Fund reduction - ₹ 241 Crore
- ii) Interest on Income Tax Refund reduction - ₹ 734 Crore
- iii) Miscellaneous Income, Provision and Liabilities Write back increase - ₹ 785 Crore

# Cost of Material Consumed (₹ Crore)



A MAHARATNA COMPANY

5 DECADES OF UNEARTHING ENERGY



9M 2024-25	9M 2023-24	Inc / Dec	Inc / Dec %
<b>7,766</b>	<b>8,218</b>	<b>-452</b>	<b>-6%</b> ↓

- Reason of Variance

- 1) Reduction in Explosive Expenses - ₹ 365 Crore  
(Average rate **9M 2024-25 – ₹ 37.20/kg** & **9M 2023-24 ₹ 46.03/kg**)
- 2) Reduction in Oil & Lubricant Expenses - ₹ 220 Crore  
(Due to reduction in departmental composite production & Diesel prices )
- 3) HEMM and other Spares cost increase - ₹ 134 Crore  
(Mainly due to warranty spares of new HEMM)

# Employee Benefit expenses (₹ Crore)



A MAHARATNA COMPANY



5 DECADES OF UNEARTHING ENERGY

9M 2024-25	9M 2023-24	Inc / Dec	Inc / Dec %
<b>34,160</b>	<b>35,246</b>	<b>-1,086</b>	<b>-3%</b> ↓

## Reason of Variance

- I. Reduction in Salary & Wages - ₹ 175 Crore due to reduction in Average Manpower (Manpower as on 31.12.2024 - **2,23,886** ; 31.12.2023 - **2,31,058** )
- II. Decrease in Actuarial liability of Gratuity & Leave Encashment - ₹ 1,226 Crore due to Past Service Cost recognized in FY 2023-24 due to implementation of wage revision of Non Executive employees.
- III. Other Staff Welfare Expenses increased - ₹ 312 Crore (Medical Reimbursement, Leave Travel Expenses, Actuarial LTC/LLTC liability, Widow pension)

# Depreciation & Amortisation (₹ Crore)



A MAHARATNA COMPANY



5 DECADES OF UNEARTHING ENERGY

9M 2024-25	9M 2023-24	Inc / Dec	Inc / Dec %
<b>6,364</b>	<b>4,843</b>	<b>1,521</b>	<b>31% ↑</b>

## Reason of Variance

- i) Depreciation/Impairment on Stripping Activity Assets increased by ₹ 1,085 Crore mainly due to Impairment of stripping assets of Jhingurda OCP Rs. 758.70 Crore in NCL.
- ii) Increase in depreciation on Property Plant & Equipment due to increase in CAPEX.

# Stripping Activity Adjustment (₹ Crore)



A MAHARATNA COMPANY



5 DECADES OF UNEARTHING ENERGY

9M 2024-25	9M 2023-24	Inc / Dec	Inc / Dec %
<b>-6,171</b>	<b>-4,594</b>	<b>-1,577</b>	<b>34%</b> ↑

- Reason of Variance

- Reversal of Ratio Variance reserve in Jhingurda OCP in NCL - Rs. 593.82 Crore
- Favourable Current Stripping Ratio

# Contractual expenses (₹ Crore)



A MAHARATNA COMPANY



5 DECADES OF UNEARTHING ENERGY

9M 2024-25	9M 2023-24	Inc / Dec	Inc / Dec %
<b>22,312</b>	<b>19,452</b>	<b>2,860</b>	<b>15% ↑</b>

## Reason of Variance

### i. Increase in contractual Coal Production & OB Removal

	9M 2024-25	9M 2023-24	Increase
Contractual Coal (MT)	<b>354</b>	<b>334</b>	<b>6%</b>
Contractual OB (M CuM)	<b>1,249</b>	<b>1,159</b>	<b>8%</b>

### ii. Average Wages escalation – around 14%

# Other expenses (₹ Crore)



5 DECADES OF UNEARTHING ENERGY

9M 2024-25	9M 2023-24	Inc / Dec	Inc / Dec %
<b>8,777</b>	<b>8,587</b>	<b>190</b>	<b>2%</b> ↑

## Reason of Variance

- i) R&D Expenses increase - ₹ 141 Crore
- ii) Repair & Maintenance Expenses increase - ₹ 134 Crore



A MAHARATNA COMPANY



5 DECADES OF UNEARTHING ENERGY



# Performance- Q3 24-25

# Physical Performance Q3 24-25

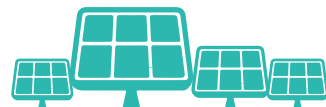


A MAHARATNA COMPANY

5 DECADES OF UNEARTHING ENERGY



	Production (MT)	Offtake (MT)	OBR (M.CuM)
<b>Q3 24-25</b>	<b>202.02</b> ↑ 2%	<b>194.41</b> ↑ 2%	<b>558.91</b> ↑ 10%
<b>Q3 23-24</b>	<b>198.99</b>	<b>191.21</b>	<b>507.78</b>



# Coal Production (MT) Q3 24-25 vs Q3 23-24



A MAHARATNA COMPANY



5 DECADES OF UNEARTHING ENERGY

Particulars	Q3 24-25	Q3 23-24	Inc/Dec %
ECL	<b>13.03</b>	11.81	<b>10%</b>
BCCL	<b>9.97</b>	10.51	<b>-5% ↓</b>
CCL	<b>22.06</b>	21.14	<b>4%</b>
NCL	<b>38.39</b>	35.47	<b>8%</b>
WCL	<b>18.43</b>	18.74	<b>-2% ↓</b>
SECL	<b>40.06</b>	45.34	<b>-12% ↓</b>
MCL	<b>60.00</b>	55.90	<b>7%</b>
NEC	<b>0.08</b>	0.07	<b>3%</b>
Total	<b>202.02</b>	198.99	<b>2%</b>

# Offtake (MT) Q3 24-25 vs Q3 23-24



A MAHARATNA COMPANY



5 DECADES OF UNEARTHING ENERGY

Particulars	Q3 24-25	Q3 23-24	Inc/Dec %
ECL	11.78	10.94	8%
BCCL	9.78	9.83	-0.47% ↓
CCL	20.89	19.68	6%
NCL	36.46	35.12	4%
WCL	17.85	18.20	-2% ↓
SECL	42.67	46.36	-8% ↓
MCL	54.92	51.04	8%
NEC	0.07	0.04	60%
<b>Total</b>	<b>194.41</b>	<b>191.21</b>	<b>2%</b>

# OBR (M.CuM) Q3 24-25 vs Q3 23-24



A MAHARATNA COMPANY



5 DECADES OF UNEARTHING ENERGY

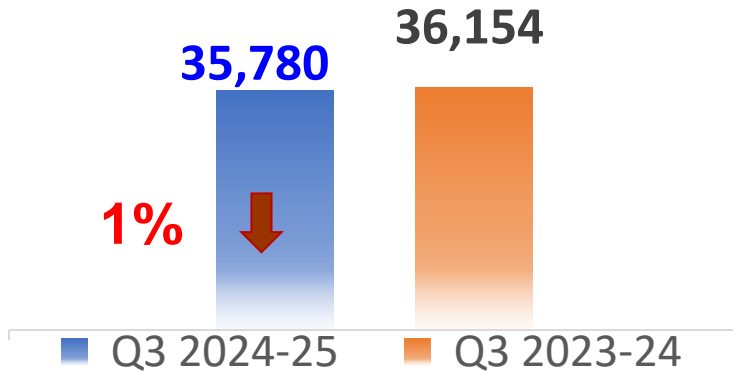
Particulars	Q3 24-25	Q3 23-24	Inc/Dec %
ECL	44.65	44.42	0.51%
BCCL	50.72	38.59	31%
CCL	31.69	31.08	2%
NCL	122.74	113.23	8%
WCL	108.41	119.23	-9% ↓
SECL	106.32	86.19	23%
MCL	93.47	74.17	26%
NEC	0.92	0.86	7%
Total	558.91	507.78	10%

# Major Highlights - Q3 2024-25

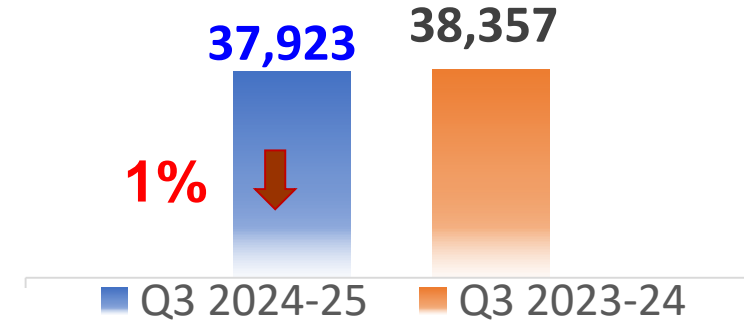


5 DECADES OF UNEARTHING ENERGY

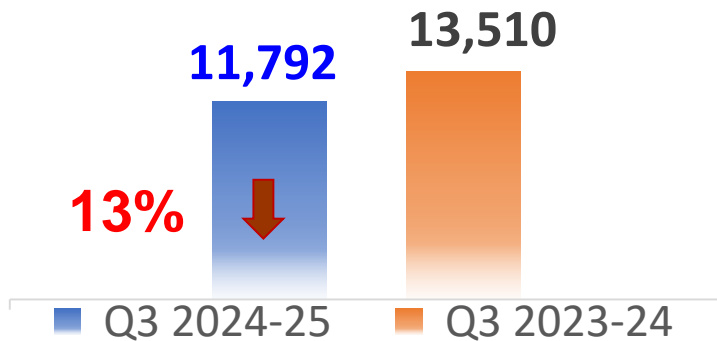
## Revenue from operations (₹ in Cr)



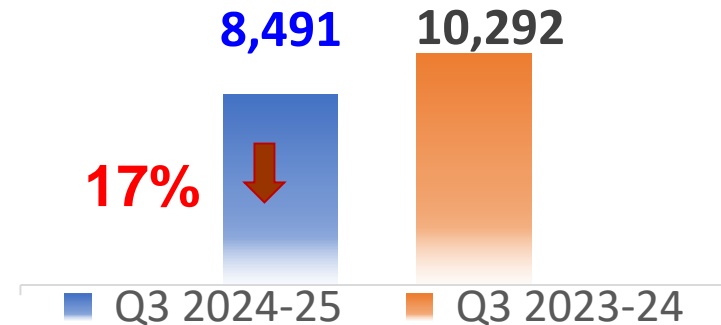
## Total Income (₹ in Cr)



## Profit Before Tax (₹ in Cr)



## Profit After Tax (₹ in Cr)



(Restated)

(Restated)

# Consolidated Financial Results Q3 24-25



A MAHARATNA COMPANY

5 DECADES OF UNEARTHING ENERGY



₹ Crores

Particulars	Q3 24-25	Q3 23-24	Inc/Dec	Inc/Dec%
Net Sales	32,359	33,011	-652	-2%
Other Operating Revenue	3,421	3,143	278	9%
Other Income	2,143	2,203	-60	-3%
<b>Total Income</b>	<b>37,923</b>	<b>38,357</b>	<b>-434</b>	<b>-1% ↓</b>
Expenditure	26,202	25,133	1069	4%
PBT (without JV)	11,721	13,224	-1503	-11%
Share of JV Profit	71	286	-215	-75%
<b>Profit Before Tax</b>	<b>11,792</b>	<b>13,510</b>	<b>-1718</b>	<b>-13% ↓</b>
Tax Expense	3,301	3218	83	3%
<b>Profit After Tax</b>	<b>8,491</b>	<b>10292</b>	<b>-1801</b>	<b>-17% ↓</b>

# Break up of Expenditure Q3 24-25

₹ Crore

Particulars	Q3 24-25	Q3 23-24	Inc/Dec	Inc/Dec%
• Cost of Materials Consumed	2,875	2,701	174	6%
Changes in inventories	-593	-607	14	-2%
• Employee Benefits Expense	11,222	11,574	-352	-3% ↓
Finance Costs	226	227	-1	-0.44%
• Depreciation, Amortization and Impairment Expenses	2,513	1,723	790	46%
• Stripping activity adjustment	-1,912	-1,034	-878	85% ↑
• Contractual Expense	8,503	7,246	1,257	17%
• Other Expenses	3,368	3,304	64	2%
<b>Total</b>	<b>26,202</b>	<b>25,133</b>	<b>1,069</b>	<b>4%</b>

# Subsidiary wise Profit Before Tax - Q3 24-25



A MAHARATNA COMPANY

5 DECADES OF UNEARTHING ENERGY



₹ Crore

Subsidiary	Q3 24-25	Q3 23-24	Inc/Dec	Inc/Dec%
ECL	24	174	-150	-86% ↓
BCCL	515	721	-206	-29% ↓
CCL	1,416	1,257	159	13% ↑
NCL	3,220	3,219	1	0.03% ↑
WCL	1,255	717	538	75% ↑
SECL	1,488	2,842	-1,354	-48% ↓
MCL	3,510	3,870	-360	-9% ↓
CMPDIL	186	132	54	41% ↑
CIL Standalone (excl. dividend)	201	294	-93	-32% ↓
<b>CIL Consolidated</b>	<b>11,792</b>	<b>13,510</b>	<b>-1,718</b>	<b>-13% ↓</b>

# Subsidiary wise Profit After Tax - Q3 24-25

₹ Crore

Subsidiary	Q3 24-25	Q3 23-24	Inc/Dec	Inc/Dec%
ECL	7	156	-149	-96% ↓
BCCL	425	624	-199	-32% ↓
CCL	1045	876	169	19% ↑
NCL	2179	2427	-248	-10% ↓
WCL	936	879	58	6% ↑
SECL	1081	2149	-1068	-50% ↓
MCL	2551	2577	-26	-1% ↓
CMPDIL	141	100	41	41% ↑
CIL Standalone (excl. dividend)	147	218	-71	-33% ↓
<b>CIL Consolidated</b>	<b>8,491</b>	<b>10,292</b>	<b>-1801</b>	<b>-17% ↓</b>

# SALES



A MAHARATNA COMPANY



5 DECADES OF UNEARTHING ENERGY

Net Sales (₹ Crore)	Q3 FY 24-25	Q3 FY 23-24	Inc / Dec	Inc / Dec %
	<b>32,359</b>	<b>33,011</b>	<b>-652</b>	<b>-2%</b> ↓



## Reason of Variance

	Q3 24-25	Q3 23-24	Inc/Dec	Impact (₹ Crore)	Remarks
<b>FSA</b>	Qty.(In Mill. Te)	<b>170.77</b>	172.30	<b>-1.53</b>	<b>-235</b> ↓ Reduction in FSA Qty.
	Price (In Rs./Te.)	<b>1,514</b>	1,532	<b>-18</b>	<b>-299</b> ↓ Reduction in Per Tonne Realization
<b>E-Auction</b>	Qty.(In Mill. Te)	<b>19.24</b>	15.76	<b>3.48</b>	<b>1,157</b> ↑ Increase in E-Auction Quantity
	Price (In Rs./Te.)	<b>2,671</b>	3,321	<b>-650</b>	<b>-1,251</b> ↓ Reduction in Per Tonne Realization
<b>Washed Coal and other</b>	Qty.(In Mill. Te)	<b>4.13</b>	3.35	<b>0.78</b>	<b>321</b> ↑ Increase in Quantity
	Price (In Rs./Te.)	<b>3,285</b>	4,122	<b>-837</b>	<b>-345</b> ↓ Reduction in Per Tonne Realization
<b>Overall Average Realization (₹ per tonne)</b>	<b>1,667</b>	<b>1,725</b>	<b>-58</b>		

# Other operating income (₹ Crore)



5 DECADES OF UNEARTHING ENERGY

(₹ Crore)

Q3 2024-25	Q3 2023-24	Inc / Dec	Inc / Dec %
<b>3,421</b>	<b>3,143</b>	<b>278</b>	<b>9%</b> ↑



## Reason of Variance

- i) First time income from Rail Line (Basundhara area) in MCL in Q3 24-25 of ₹ 40 Crore
- ii) Reclassification of Mileage and Siding User Charges amounting ₹ 42 Crore under other operating income by CCL



# Other income (₹ Crore)



5 DECADES OF UNEARTHING ENERGY

Q3 2024-25	Q3 2023-24	Inc / Dec	Inc / Dec %
<b>2,143</b>	<b>2,203</b>	<b>-60</b>	<b>-3% ↓</b>

- Reason of Variance

- i) Interest on Income Tax Refund reduction - ₹ 745 Crore
- ii) Miscellaneous Income, Provision and Liabilities Write back increase - ₹ 682 Crore

# Cost of Material Consumed (₹ Crore)



5 DECADES OF UNEARTHING ENERGY

Q3 2024-25	Q3 2023-24	Inc / Dec	Inc / Dec %
<b>2,875</b>	<b>2,701</b>	<b>174</b>	<b>6%</b> ↑

## Reason of Variance

- 1) Increase in Explosive Expenses - ₹ 146 Crore  
(Increase in composite production – 8%)
- 2) Reduction in Oil & Lubricant Expenses - ₹ 31 Crore  
(Due to reduction in departmental composite production)
- 3) HEMM and other Spares cost increase - ₹ 59 Crore  
(Mainly due to warranty spares of new HEMM)

# Employee Benefit expenses (₹ Crore)



A MAHARATNA COMPANY



5 DECADES OF UNEARTHING ENERGY

Q3 2024-25	Q3 2023-24	Inc / Dec	Inc / Dec %
<b>11,222</b>	<b>11,574</b>	<b>-352</b>	<b>-3%</b> ↓

## Reason of Variance

- I. Reduction in Salary & Wages - ₹ 441 Crore due to reduction in Average Manpower (Manpower as on 31.12.2024 - **2,23,886** ; 31.12.2023 - **2,31,058** )
- II. Contribution to Provident Fund and Other Funds increased - ₹ 74 Crore due to Actuarial Liability
- III. Other Staff Welfare Expenses increased - ₹ 15 Crore

# Depreciation & Amortisation (₹ Crore)



5 DECADES OF UNEARTHING ENERGY

Q3 2024-25	Q3 2023-24	Inc / Dec	Inc / Dec %
<b>2,513</b>	<b>1,723</b>	<b>790</b>	<b>46%</b> ↑

- Reason of Variance

i) Impairment of stripping assets of Jhingurda OCP Rs. 758 Crore in NCL

# Stripping Activity Adjustment (₹ Crore)



5 DECADES OF UNEARTHING ENERGY

Q3 2024-25	Q3 2023-24	Inc / Dec	Inc / Dec %
<b>-1,912</b>	<b>-1,034</b>	<b>-878</b>	<b>85%</b> ↑

- Reason of Variance

i) Favourable Current Stripping Ratio



# Contractual expenses (₹ Crore)



5 DECADES OF UNEARTHING ENERGY

Q3 2024-25	Q3 2023-24	Inc / Dec	Inc / Dec %
<b>8,503</b>	<b>7,246</b>	<b>1,257</b>	<b>17% ↑</b>

## Reason of Variance

i. Increase in contractual Coal Production & Contractual OB:-

	Q3 2024-25	Q3 2023-24	Increase
Contractual Coal (MT)	<b>132</b>	<b>125</b>	<b>6%</b>
Contractual OB (M CuM)	<b>492</b>	<b>435</b>	<b>13%</b>

ii. Average Wages escalation – around 4%

# Other expenses (₹ Crore)



5 DECADES OF UNEARTHING ENERGY

Q3 2024-25	Q3 2023-24	Inc / Dec	Inc / Dec %
<b>3,368</b>	<b>3,304</b>	<b>64</b>	<b>2% ↑</b>

- Reason of Variance

i) Repair & Maintenance Expenses increase - ₹ 89 Crore

# Gross Trade Receivables – Subsidiary wise (in ₹ Crore)

Subsidiary	As on 31.12.2024	As on 31.03.2024	Incr / (Dec)
ECL	1,639	1,640	-1 ↓
BCCL	1,814	1,499	315
CCL	3,566	2,368	1,198
NCL	3,239	1,410	1,829
WCL	4,270	4,548	-278 ↓
SECL	2,809	2,045	764
MCL	3,628	2,103	1,525
CIL	11	11	-
<b>CIL Consolidated</b>	<b>20,976</b>	<b>15,624</b>	<b>5,352</b>

\*Before adjustment of unbilled incentive and Coal Quality Variance etc

# Gross Trade Receivables – Customer wise (in ₹ Crore)



A MAHARATNA COMPANY

5 DECADES OF UNEARTHING ENERGY



Party	As on 31.12.2024	As on 31.03.2024	Increase / (Decrease) from 31.03.2024
MAHAGENCO	3,412	3,935	-523 ↓
MPPGCL	2,757	1,341	1,416
NTPC	2,727	2,144	583
RRVUNL	2,211	595	1,616
APGENCO	1,944	759	1,185
DVC	1,856	1,666	190
TVNL	1,166	724	442
RINL	763	469	294
SAIL	643	546	97
TANGEDCO	600	493	107
Others	2,896	2,952	-56 ↓
<b>Total</b>	<b>20,976</b>	<b>15,624</b>	<b>5,352</b>

\*Before adjustment of unbilled incentive and Coal Quality Variance etc

## Trade Receivables Ageing - Subsidiary wise (in ₹ Crore)



A MAHARATNA COMPANY

5 DECADES OF UNEARTHING ENERGY



Subsidiary	Upto 6 months	More than 6 months but upto 1 year	More than 1 year but upto 2 years	More than 2 years but upto 3 years	More than 3 years	Total as on 31.12.24
ECL	979	9	24	41	586	1,639
BCCL	1,230	91	33	32	429	1,814
CCL	1,679	415	420	334	718	3,566
NCL	2,194	592	0.04	136	318	3,239
WCL	3,618	22	0.06	38	592	4,270
SECL	2,127	0.00	2	-7	686	2,809
MCL	1,957	1,201	458	0.00	13	3,628
NEC	0.00	0.00	0.00	0.00	11	11
<b>Total</b>	<b>13,783</b>	<b>2,330</b>	<b>937</b>	<b>574</b>	<b>3,352</b>	<b>20,976</b>

## Trade Receivable Ageing - Customer wise (in ₹ Crore)

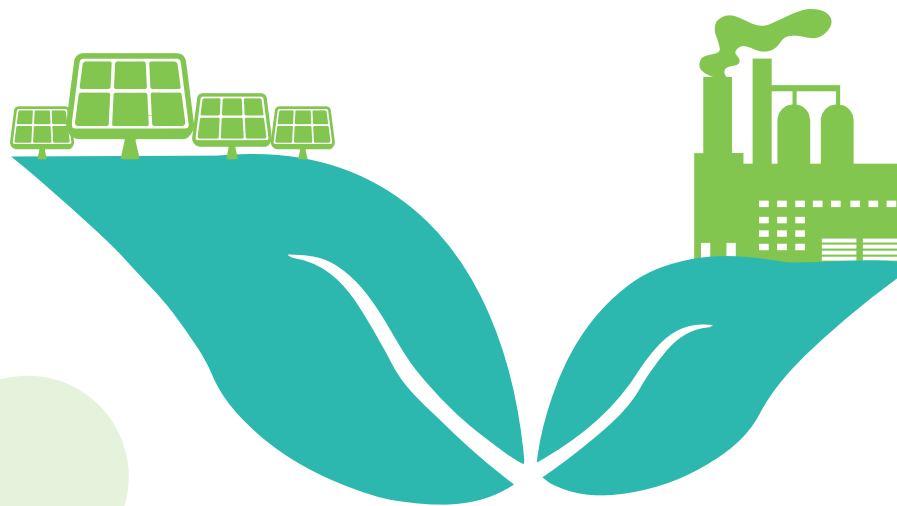
Name of Consumers	Upto 6 months	More than 6 months but upto 1 year	More than 1 year but upto 2 years	More than 2 years but upto 3 years	More than 3 years	Total as on 30.09.24
MAHAGENCO	2,810	83	-	26	494	3,413
MPPGCL	2,434	-	2	4	317	2,757
NTPC	1,919	12	29	158	608	2,726
RRVUNL	1,614	592	-	-	5	2,211
APGENCO	1,087	857	-	-	-	1,944
DVC	1,389	49	103	12	304	1,857
TVNL	327	289	114	146	290	1,166
RINL	191	123	126	166	157	763
SAIL	431	13	24	12	164	644
TANGEDCO	238	9	-	0.04	352	599
Others	1,345	302	538	50	661	2,896
<b>Total</b>	<b>13,785</b>	<b>2,329</b>	<b>936</b>	<b>574</b>	<b>3,352</b>	<b>20,976</b>



A MAHARATNA COMPANY



5 DECADES OF UNEARTHING ENERGY



Thank You

# ECL Variance

- Sales quantity increased by 20% (5.95 MT) whereas sales amount increased by 4% only due to decrease in E-Auction rates and reduction in FSA rates due to grade mix

Net Sales (₹ Crore)	9M FY 24-25	9M FY 23-24	Inc / Dec	Inc / Dec %
	<b>9,982</b>	<b>9,582</b>	<b>400</b>	<b>4%</b>

	9M FY 24-25	9M FY 23-24	Inc/Dec	Impact (₹ Crore)	Remarks	
<b>FSA</b>	Qty.(In Mill. Te)	<b>30.40</b>	24.62	<b>5.78</b>	<b>1,627</b>	Increase in FSA Qty.
	Price (In Rs./Te.)	<b>2,524</b>	2,817	<b>-293</b>	<b>-892</b>	Reduction in Per Tonne Realization

<b>E-Auction</b>	Qty.(In Mill. Te)	<b>4.62</b>	4.46	<b>0.17</b>	<b>100</b>	Increase in E-Auction Quantity
	Price (In Rs./Te.)	<b>5,001</b>	5,942	<b>-941</b>	<b>-435</b>	Reduction in Per Tonne Realization

- Increase in Contractual Expenses by ₹ 553 Crore (31%) due to increase in average wage rate and Contractual Production as below:

	Q3 2024-25	Q3 2023-24	Increase
Contractual Coal (MT)	<b>27</b>	<b>22</b>	<b>25%</b>
Contractual OB (M CuM)	<b>116</b>	<b>95</b>	<b>23%</b>

## • MCL Variance

➤ Sales quantity increased by 8%(12.23 MT) whereas sales amount decreased by 3% ( ₹ 470 Crores) due to decrease in E-Auction rates, SHAKTI rates and rates of NRS sale as below:

	9M 24-25			9M 23-24			Variance (₹ Crore)	
	Qty (MT)	Rate	Amount (₹ Crore)	Qty (MT)	Rate	Amount (₹ Crore)	Qty	Price
Non Regulated Sector (NRS)	21.82	1,238.51	2,702.42	20.66	1,269.29	2,622.97	146.61	-67.17
SHAKTI	19.94	961.79	1,917.80	17.27	1,358.06	2,345.46	362.51	-790.17
E- Auction	16.61	1,504.17	2,498.43	14.19	2,332.11	3,309.74	563.90	-1,375.21
Total							1,073.02	-2,232.54

## ● CCL Variance

- Increase in PBT to ₹ 4,575 Crore from ₹ 3863 Crore i.e. by ₹ 712 Crore
- Increase in Sales by ₹ 265 Crore due to increase in sales quantity by 5%
- Increase in Stripping Activity Adjustment from -67 Crore to -625 Crore i.e. an additional income of ₹ 558 crore - Due to excess OBR production as compared to Standard Stripping Ratio mainly in Rajrappa, AKK, AADOCM, KDH and Urimari OCP.

## • SECL Variance

- Decrease in PBT by ₹ 2,896 Crore
- Decrease in Sales by ₹ 2,115 Crore due to decrease in offtake by 6% (7.66 Mill.Te.) and provision for Coal Quality Variance of ₹ 405 Crore
- Reduction in other income by ₹ 489 Crore - Interest on income tax refund in 9M 2023-24 - ₹ 1032 Crore & Provision Write back w.r.t. NTPC in 9M 2024-25 – ₹ 628 Crore

## • BCCL Variance (Quarterly)

- Decrease in PBT by ₹ 207 Crore
- Increase in Sales by ₹ 204 Crore due to better average realization from ₹3232.80/Te to ₹3338.63/Te
- Reduction in Stripping Activity Adjustment by ₹ 163 Crore (reduction in profit)
- Increase in contractual expenses by ₹ 365 crore i.e. 52%, due to increase in contractual composite production by 30% and higher expenses on MDO and High wall mining.

## • WCL Variance (Quarterly)

- Increase in PBT by ₹ 538 Crore
- Decrease in Sales by ₹ 60 Crore due to reduction in sales quantity by 0.34 MT
- Reduction in other expenses by ₹ 437 Crore due to provisioning of ₹ 527 Crore in Q3 2023-24 for PI receivable outstanding for more than 3 years.
- Increase in Stripping Activity Adjustment by ₹ 65 Crore from -572 Crore to -637 Crore

# FSA SALES



5 DECADES OF UNEARTHING ENERGY

	9M 24-25			9M 23-24			Variance (In Crores)	
	Qty	Rate	Amount	Qty	Rate	Amount	Qty	Price
<b>Non Coking Coal</b>								
Fuel Supply Agreement (FSA)	340.18	1,356.68	6,151.33	356.14	1,357.16	48,333.64	-2,165.89	-16.42
MOU sale	14.64	1,997.35	2,924.75	8.42	1,970.77	1,660.09	1,225.73	38.92
<b>Non Regulated Sector (NRS)</b>	<b>45.90</b>	<b>1,508.69</b>	<b>6,925.35</b>	<b>46.72</b>	<b>1,600.31</b>	<b>7,476.67</b>	<b>-130.75</b>	<b>-420.57</b>
<b>SHAKTI</b>	<b>57.18</b>	<b>1,219.80</b>	<b>6,974.88</b>	<b>47.45</b>	<b>1,346.22</b>	<b>6,387.88</b>	<b>1,309.86</b>	<b>-722.86</b>
State Nominated Authority	0.81	1,962.96	159.00	0.02	2,639.13	6.07	207.70	-54.77
Sub-Total	<b>458.72</b>	<b>1,376.35</b>	<b>63,135.30</b>	<b>458.76</b>	<b>1,392.12</b>	<b>63,864.35</b>	<b>446.65</b>	<b>-1,175.70</b>
<b>Coking Coal</b>								
Fuel Supply Agreement (FSA)	20.63	2,586.86	5,335.90	28.53	2,549.65	7,273.42	-2,014.27	76.76
MOU sale	4.80	3,601.96	1,727.24	1.50	3,753.95	563.19	1,236.93	-72.88
Non Regulated Sector (NRS)	1.72	3,558.75	611.65	1.68	3,543.12	595.12	13.84	2.69
SHAKTI	5.53	2,536.59	1,403.65	3.99	2,629.63	1,049.38	405.76	-51.49
Sub-Total	<b>32.67</b>	<b>2,778.44</b>	<b>9,078.44</b>	<b>35.70</b>	<b>2,655.95</b>	<b>9,481.11</b>	<b>-357.74</b>	<b>-44.93</b>
<b>Total</b>	<b>491.39</b>	<b>1,469.58</b>	<b>72,213.74</b>	<b>494.45</b>	<b>1,483.37</b>	<b>73,345.46</b>	<b>88.91</b>	<b>-1,220.63</b>
<b>Coal Quality Variance</b>			<b>-581.29</b>			<b>884.72</b>		<b>-1466.01</b>
Performance Incentive			2,183.87			1,742.18		441.69
Total CQV & PI			1,602.58			2,626.90		-1024.32
<b>Total including CQV &amp; PI</b>	<b>491.39</b>	<b>1,502.19</b>	<b>73,816.32</b>	<b>494.45</b>	<b>1,536.49</b>	<b>75,972.36</b>	<b>-470.58</b>	<b>-1,685.46</b>

## FSA & E-AUCTION 9M 2024-25 & 9M 2023-24



9M FY 2024-25									
Particulars (Raw Coal)	ECL	BCCL	CCL	NCL	WCL	SECL	MCL	NEC/CIL	Overall CIL
	<b>FSA</b>								
Quantity (Million Tonne)	30.40	23.42	50.91	95.42	43.83	109.16	138.26	-	491.39
Sale Price per Tonne (In ₹)	2,523.42	3,074.71	1,580.65	1,544.84	2,114.30	1,155.27	1,032.86	-	1,502.19
<b>E-Auction</b>									
Quantity (Million Tonne)	4.62	0.84	7.85	6.97	4.83	15.60	16.61	0.20	57.52
Sale Price per Tonne (In ₹)	5,001.04	5,113.68	2,378.41	3,442.62	3,017.16	2,156.55	1,504.17	6,525.12	2,513.74
9M FY 2023-24									
Particulars (Raw Coal)	ECL	BCCL	CCL	NCL	WCL	SECL	MCL	NEC/CIL	Overall CIL
	<b>FSA</b>								
Quantity (Million Tonne)	24.62	24.75	51.25	97.73	47.18	117.51	131.43	-	494.46
Sale Price per Tonne (In ₹)	2,816.80	2,781.96	1,557.32	1,471.41	2,297.78	1,220.13	1,111.85	-	1,536.46
<b>E-Auction</b>									
Quantity (Million Tonne)	4.46	1.01	4.68	5.59	2.72	14.94	14.19	0.09	47.67
Sale Price per Tonne (In ₹)	5,942.45	6,266.50	3,548.22	4,634.49	3,973.46	2,512.78	2,332.45	7,810.00	3,302.76

## Grade wise Coal 9M 2024-25 & 9M 2023-24



A MAHARATNA COMPANY

**5 DECADES OF UNEARTHING ENERGY**

Grade	ECL		BCCL		CCL		NCL		WCL		SECL		MCL		Total		% Share	
	9M 24-25	9M 23-24	9M 24-25	9M 23-24	9M 24-25	9M 23-24	9M 24-25	9M 23-24	9M 24-25	9M 23-24	9M 24-25	9M 23-24	9M 24-25	9M 23-24	9M 24-25	9M 23-24	9M 24-25	9M 23-24
<b>RAW NON-COKING COAL</b>																		
G01	-	-									-	-			-	-	0%	0%
G02	-	-									0.18	-			0.18	-	0%	0%
G03	0.58	0.82									0.96	0.90			1.54	1.72	0%	0%
G04	13.89	11.27									0.08	0.01			13.97	11.28	3%	2%
G05	3.40	3.83	0.01		0.16	0.54	0.61	0.80			1.00	0.79			5.17	5.97	1%	1%
G06	0.67	1.39	0.05	0.11	1.53	0.51			0.06	0.07	3.10	3.34	0.00	-	5.40	5.42	1%	1%
G07	1.90	2.24	0.33	0.26	0.45	1.40	6.61	5.46	0.26	0.06	3.98	2.11	0.04	-	13.56	11.54	3%	2%
G08	1.53	1.64		0.25	4.20	3.57	22.11	18.42	2.87	0.56	6.90	5.53	0.58	0.04	38.19	30.01	7%	6%
G09	-	-	0.31	0.21	3.32	3.41	13.63	9.58	1.53	4.19	2.23	1.59	0.08	0.23	21.10	19.20	4%	4%
G10	1.48	0.10		0.10	1.55	2.32	53.30	55.83	18.38	15.39	6.31	2.61	0.87	2.30	81.90	78.65	16%	16%
G11	0.41	1.17			22.86	19.16	2.88	9.81	19.33	21.06	85.09	100.02	16.72	3.69	147.29	154.91	29%	31%
G12	1.78	-			13.61	9.94	0.45	1.10	2.51	4.29	2.97	0.84	59.11	54.27	80.43	70.44	16%	14%
G13	9.39	6.59			-	2.32	2.80	2.32	3.79	4.23	7.90	5.81	37.47	44.70	61.34	65.98	12%	13%
G14	-	-									1.61	5.16	36.01	39.73	37.62	44.89	7%	9%
G15	-	-									2.06	3.57	3.97	0.67	6.03	4.24	1%	1%
G16	-	-									0.23	-			0.23	-	0%	0%
G17															-	-	0%	0%
Deshale Coal								1.74							-	1.74	0%	0%
<b>TOTAL</b>	<b>35.02</b>	<b>29.07</b>	<b>0.70</b>	<b>0.93</b>	<b>47.67</b>	<b>43.18</b>	<b>102.39</b>	<b>105.06</b>	<b>48.74</b>	<b>49.86</b>	<b>124.60</b>	<b>132.28</b>	<b>154.85</b>	<b>145.62</b>	<b>513.97</b>	<b>505.99</b>	<b>100%</b>	<b>100%</b>

# ISSUES WHICH IMPACTED PHYSICAL PERFORMANCE in 9M 24-25



5 DECADES OF UNEARTHING ENERGY



- **BCCL:** Land issue, fire in OB & Coal bench.
- **SECL:** Land issue resulted in less coal exposure at major mines Dipka OC and Kusmunda OC.

# ISSUES WHICH IMPACTED PHYSICAL PERFORMANCE in 9M 24-25



A MAHARATHA COMPANY



5 DECADES OF UNEARTHING ENERGY

- **CCL:** Non-availability of CTO, Land, EC and FC issues at several mines affected production.
- **NCL:** Excessive rainfall, almost doubled the rainfall of the FY 23-24
- **WCL:** Under performance of HoE contractor.

# Gross Trade Receivables – Subsidiary wise (in ₹ Crore)



A MAHARATHA COMPANY

5 DECADES OF UNEARTHING ENERGY

Subsidiary	As on 31.12.2024	As on 31.12.2023	As on 31.03.2024
ECL	1,639	1,982	1,640
BCCL	1,814	2,038	1,499
CCL	3,566	2,352	2,368
NCL	3,239	2,856	1,410
WCL	4,270	5,162	4,548
SECL	2,809	2,826	2,045
MCL	3,628	3,017	2,103
CIL	11	11	11
<b>CIL Consolidated</b>	<b>20,976</b>	<b>20,244</b>	<b>15,624</b>

\*Before adjustment of unbilled incentive and Coal Quality Variance etc

# Gross Trade Receivables – Customer wise (in ₹ Crore)



5 DECADES OF UNEARTHING ENERGY

Party	As on 31.12.2024	As on 31.03.2024	As on 31.12.2023
MAHAGENCO	3,412	3,935	4,325
MPPGCL	2,757	1,341	1,981
NTPC	2,727	2,144	2,851
RRVUNL	2,211	595	971
APGENCO	1,944	759	798
DVC	1,856	1,666	1,755
TVNL	1,166	724	604
RINL	763	469	
SAIL	643	546	671
TANGEDCO	600	493	675
Others	2,896	2,952	4,988
<b>Total</b>	<b>20,976</b>	<b>15,624</b>	<b>20,244</b>

\*Before adjustment of unbilled incentive and Coal Quality Variance etc